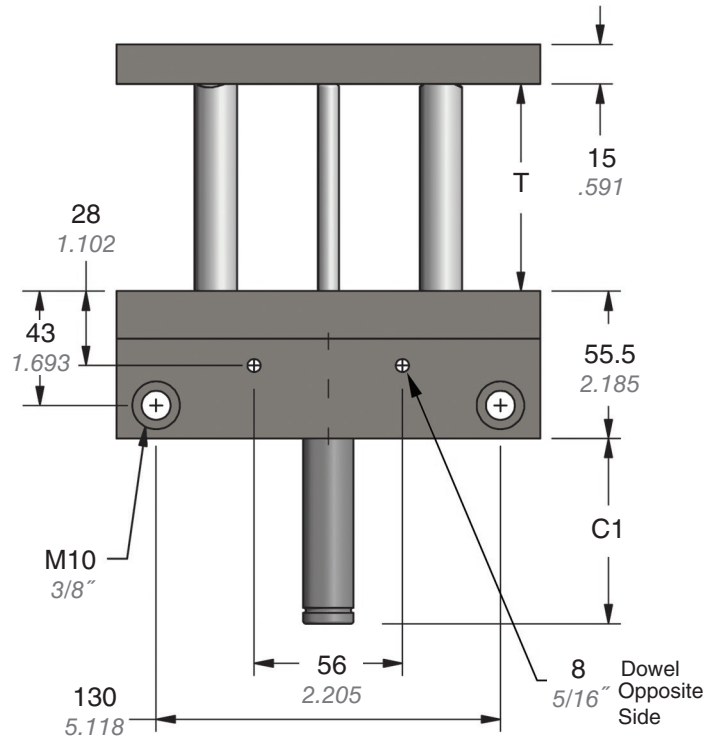


**SL2.090 Side Mount**

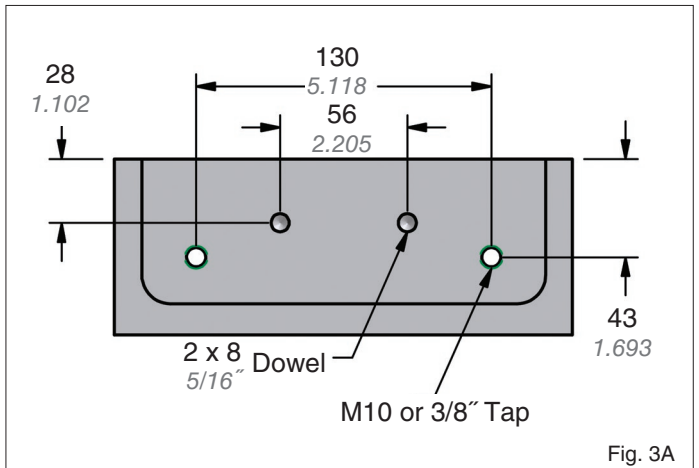
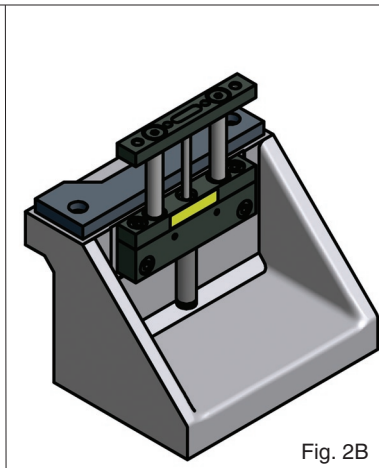
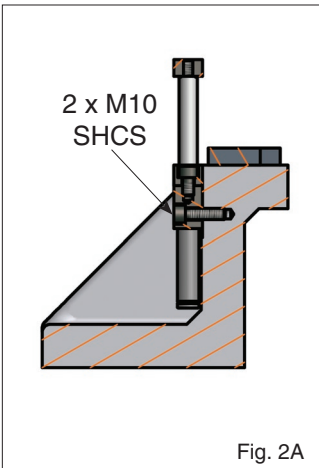


SL2.090.050.B7.M.150



Refer to Bulletin #B05138A for all other dimensions.

Stroke	38	50	63	80	100	125	150	175	200
C1	24.5	36.5	53.0	69.5	89.5	114.5	147.5	172.5	197.5
	.96	1.44	2.09	2.74	3.52	4.51	5.81	6.79	7.78



Install the SL2.090 lifter with a B7 mount using two M10 SHCS, shown in Figure 2A. Figure 2B depicts a SL2.090 lifter installed in an application.

Use the specifications in Figure 3A when machining the surface for installation of a SL2.090 lifter with a B7 mount.

**Ordering Example:**

SL2.090. 080. B7. M. 150

**Part Number:** \_\_\_\_\_  
Includes Series and Model.

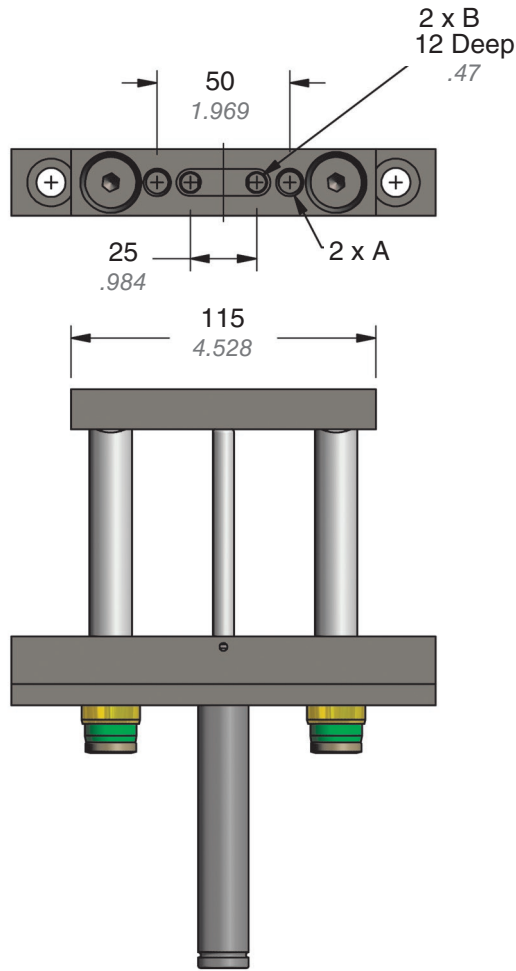
**Stroke Length:** \_\_\_\_\_  
038, 050, 063, 080, 100, 125, 150, 175 and 200.  
Other stroke lengths are available,  
contact DADCO for more information.

**Charging Pressure of Micro Gas Spring:**  
Specify Pressure: 500 – 2560 psi, 34 – 177 bar.  
When not specified, default is 150 bar.

**Rail Plate:** M, E, U, M1, E1 or U1  
U and U1 are unfinished rail plates for customization. When not specified, default is M.

**Mount Option:**  
B5 = Vertical, B7 = Side. When not specified, default is B5.

B06101A



SL2.090.050.B5.M1.150

Refer to Bulletin #B05138A for all other dimensions.

Rail Plate	A	ØB
Metric (M1)	M10x1.5	8 mm
Imperial (E1)	3/8"-16 UNC	5/16"

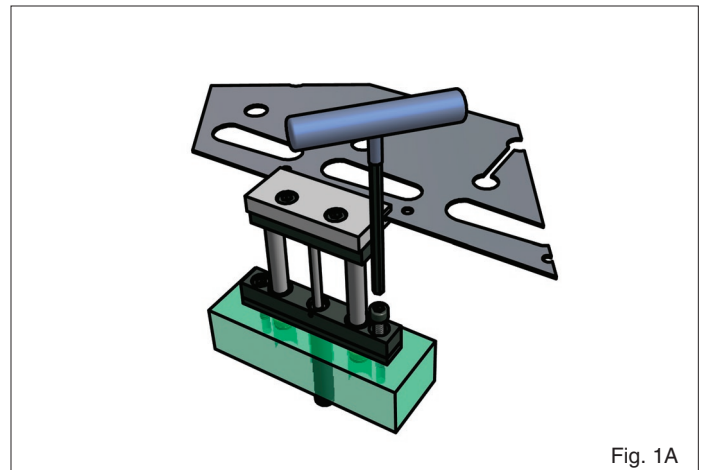


Fig. 1A

The compact rail plate allows for easy access to mounting screws. Figure 1A depicts a rail plate with a guide rail attached. A wrench is used to loosen the two mounting screws, where access is constrained.

**Ordering Example:**

**SL2.090. 080. B5. M1. 150**

**Part Number:** \_\_\_\_\_  
Includes Series and Model.

**Stroke Length:** \_\_\_\_\_  
038, 050, 063, 080, 100, 125, 150, 175 and 200.  
Other stroke lengths are available,  
contact DADCO for more information.

**Charging Pressure of Micro Gas Spring:**  
Specify Pressure: 500 – 2560 psi, 34 – 177 bar.  
When not specified, default is 150 bar.

**Rail Plate:** M, E, U, M1, E1 or U1  
U and U1 are unfinished rail plates for customization. When not specified, default is M.

**Mount Option:**  
B5 = Vertical, B7 = Side. When not specified, default is B5.

B06101A