

MINI FITTINGS

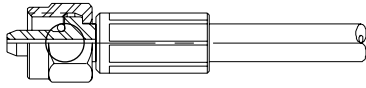
Series 90.3 (L), 90.7 (LJ), Ultra Force™ (U) & Micro (C)

Hose Adapters

90.700 (Y-700) PERMANENT HOSE ADAPTERS

Refer to the Hose Summary Chart for crimp die information.
Contact DADCO to order preassembled hose and adapters.
Request bulletin no. B00106 for more information on the Mini-Crimp.

90.601.943
(L-943)
Straight Swivel



Hose Strap

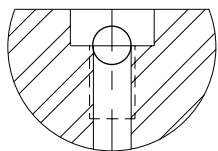
90.600.250
(L-250)
Permanent adhesive strap, affix to a clean surface.

DADCO MINIFLEX™ Hose 90.700 (Y-700)

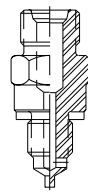
Hose Summary

	OD	ID	Working Pressure	Burst Pressure	Bend Radius	Crimp Die
90.700 (Y-700)	5.3 (0.21)	2.3 (0.09)	413 bar 6000 psi	1655 bar 24000 psi	6.4 (0.25)	MINI-CRIMP-90.710.1 (MC-1) NO RING REQUIRED

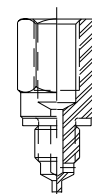
Micro Series Port Adapters



M6 Port

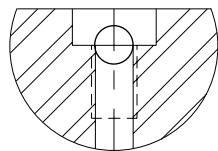


90.607.122
(L-122)
Micro Service Fitting

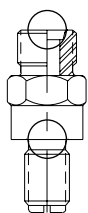


90.607.038
(L-38)
Micro Port Adapter Extension

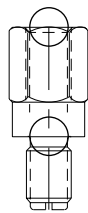
Port Adapters



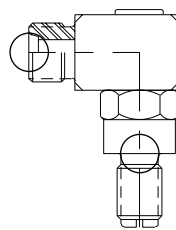
M6 Port



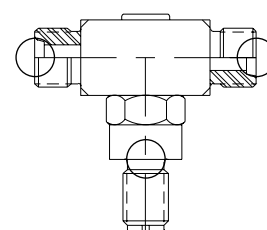
90.607.120
(L-120)
Service Fitting



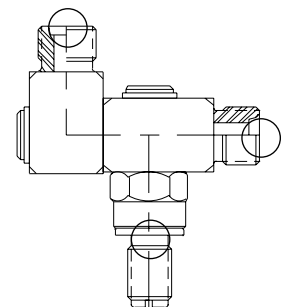
90.607.035
(L-35)
Port Adapter Extension



90.607.220
(L-220)
90° Elbow

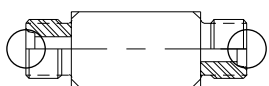


90.607.429
(L-429)
Branch Tee

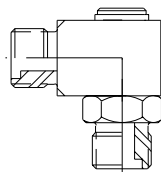


90.607.428
(L-428)
Run Tee

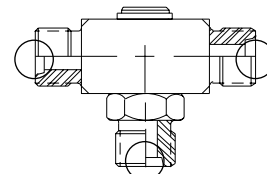
Fittings



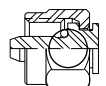
90.606.303
(L-303)
Union



90.607.201
(L-201)
Elbow

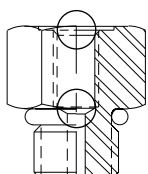


90.607.401
(L-401)
Union Tee

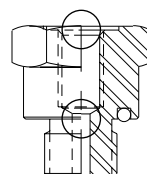


90.605.109
(L-109)
Fitting Plug

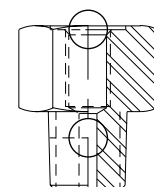
Reducer Fittings



90.607.055
(L-55)
Reducer
(7/16-20 -> M6)



90.607.065
(L-65)
Reducer
(G 1/8 -> M6)



90.607.075
(L-75)
Reducer
(1/8 NPT -> M6)