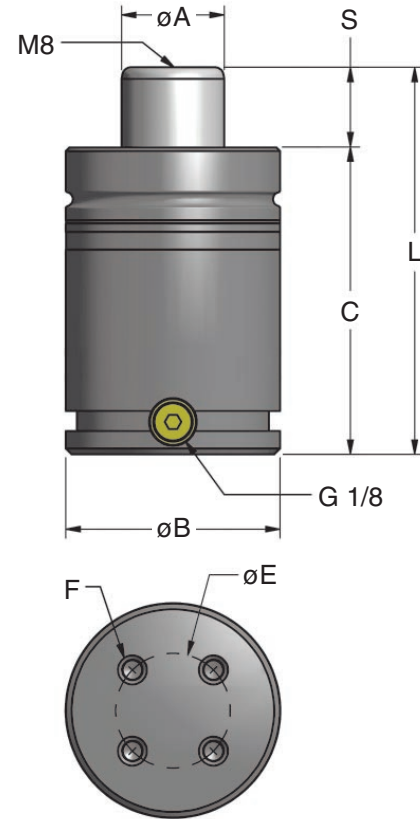


DADCO offers the 90.5B2.01500 and 90.5B2.03000 Models as replacements for the corresponding 90.5B Models. For new designs and to update 90.5B.00750, 90.5B.05000 or 90.5B.07500 Models, DADCO recommends using the 90.8 Series. For information on the 90.8 Series, refer to catalog C07102A.

Part No.	S mm inch	01500 – 03000	
		C	L
90.5B2.____.013	12.5 0.49	114.1 4.492	126.6 4.984
90.5B2.____.025	25 0.98	126.6 4.984	151.6 5.969
90.5B2.____.038	37.5 1.48	139.1 5.476	176.6 6.953
90.5B2.____.050	50 1.97	151.6 5.969	201.6 7.937
90.5B2.____.063	62.5 2.46	164.1 6.461	226.6 8.921
90.5B2.____.075	75 2.95	176.6 6.953	251.6 9.906
90.5B2.____.080	80 3.15	181.6 7.150	261.6 10.299
90.5B2.____.088	87.5 3.44	189.1 7.445	276.6 10.890
90.5B2.____.100	100 3.94	201.6 7.937	301.6 11.874
90.5B2.____.113	112.5 4.43	214.1 8.429	326.6 12.858
90.5B2.____.125	125 4.92	226.6 8.921	351.6 13.843
90.5B2.____.138	137.5 5.41	239.1 9.413	376.6 14.827
90.5B2.____.150	150 5.91	251.6 9.906	401.6 15.811
90.5B2.____.160	160 6.30	261.6 10.299	421.6 16.598
90.5B2.____.175	175 6.89	276.6 10.890	451.6 17.780
90.5B2.____.200	200 7.87	301.6 11.874	501.6 19.748
90.5B2.____.225	225 8.86	326.6 12.858	551.6 21.717
90.5B2.____.250	250 9.84	351.6 13.843	601.6 23.685



TO - Basic Model

Model		90.5B2.01500	90.5B2.03000
Contact Force	daN	1527	2945
	lb.	3432	6619
90% Travel	daN	2046	4263
	lb.	4599	9584
A		36 1.42	50 1.97
B		75 2.953	95 3.740
E		40 1.575	60 2.362
F		4 x M8	4 x M8

Ordering Example:

90.5B2.01500.025. TO. C. 150

Part Number:

Includes Series, Model and Stroke Length.

Mount Option:

TO = Basic Model. See 90.10 Catalog (C06111B) for additional mount options. *When not specified, default is TO. Mount ordered with cylinder will be attached at the factory.*

Charging Pressure:

15-150 bar (220-2175 psi). *When not specified, default is 150 bar.*

Operating System:

C = Self-contained, F = Open Flow Fitting. *When not specified, default is C, self-contained.*

90.5B2 Operating and Technical Specifications

Operating Specifications

Charging Medium:	Nitrogen Gas
Charging Pressure Range:	15 – 150 bar (220 – 2175 psi)
Operating Temperature:	-6°C – 71°C (20°F – 160°F)*
Maximum Speed:	.5 m/sec (20 in/sec)

*For extended range applications contact DADCO.

90.5B2 Series Repair Kits

Include a fully assembled DADCO cartridge, dust cover, bottle of assembly oil and step-by-step maintenance manual.

Model	Kit Number
90.5B2.01500	90.208.01500
90.5B2.03000	90.208.03000

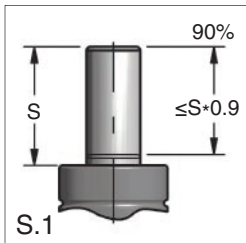
90.5B2.01500 On-Contact Force

Imperial		Metric	
psi	lb.	bar	daN
2175	3432	150	1527
2000	3155	125	1272
1750	2761	100	1018
1500	2367	75	763
1000	1578	50	509
500	789	25	254
250	394	20	204

90.5B2.03000 On-Contact Force

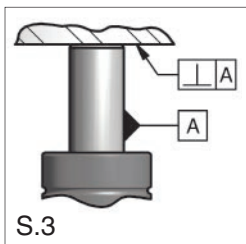
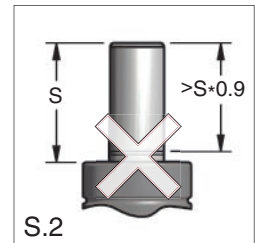
Imperial		Metric	
psi	lb.	bar	daN
2175	6619	150	2945
2000	6087	125	2454
1750	5326	100	1963
1500	4565	75	1473
1000	3043	50	982
500	1522	25	491
250	761	20	393

Standard Installation Principles



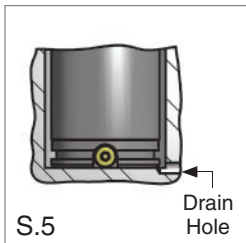
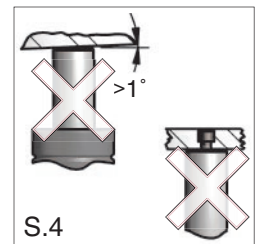
Provide Stroke Reserve

- DADCO's 90.5B2 Series Gas Springs will permit travel of the full nominal stroke; however, at least a 10% stroke reserve is recommended to achieve optimal performance and safety (S.1, S.2).
- Overstroking the rod or impacting the top of the gas spring will cause permanent damage.



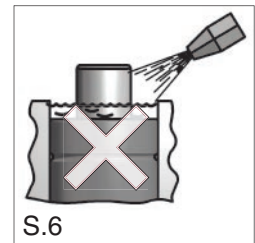
Avoid Side Loading

- Side loading resulting from press action or die construction causes increased wear on the bearing, seal and piston rod (S.4). Therefore, avoid side loading when possible (S.3).



Protect From Fluids

- Direct contact with certain die lubricants and cleaners should be avoided (S.6). Protect gas springs by providing adequate drainage in gas spring pockets (S.5).



To see DADCO's full line of mounts, accessories and linked system capabilities, refer to catalog C06111B.

DADCO®

43850 Plymouth Oaks Blvd. • Plymouth, Michigan • 48170 • USA
734.207.1100 • 800.DADCO.USA • fax 734.207.2222 • www.dadco.net

The global leader in nitrogen gas spring technology